



REGINA MARIE WILLIAMS. PHOTO BY LUCAS WELLS.

HELLO, DOLLY!

BOOK BY MICHAEL STEWART

MUSIC & LYRICS BY JERRY HERMAN

BASED ON THE PLAY *THE MATCHMAKER* BY THORNTON WILDER

ORIGINAL PRODUCTION DIRECTED AND CHOREOGRAPHED BY GOWER CHAMPION

PRODUCED FOR THE BROADWAY STAGE BY DAVID MERRICK AND CHAMPION FIVE, INC.

DIRECTED & CHOREOGRAPHED BY KELLI FOSTER WARDER

MUSIC DIRECTION BY SANFORD MOORE



THEATER MUSICALLY

FEB 1 - MAR 19, 2023 • RITZ THEATER

Compose yourself your way.

However your day unfolds,
let YourClassical MPR
meet you where you are.

TUNE IN OR STREAM AT YOURCLASSICALMPR.ORG



 YourClassical
MPR



BOOK BY MICHAEL STEWART
MUSIC & LYRICS BY JERRY HERMAN
BASED ON THE PLAY *THE MATCHMAKER* BY THORNTON WILDER

ORIGINAL PRODUCTION DIRECTED AND CHOREOGRAPHED BY GOWER CHAMPION
PRODUCED FOR THE BROADWAY STAGE BY DAVID MERRICK AND CHAMPION FIVE, INC.

THE CAST

(in alphabetical order)

Irene Molloy.....	China Brickey*
Minnie Fay/Ensemble.....	Anna Hashizume
Ensemble/Barnaby Understudy.....	Jordan M. Leggett
Barnaby.....	Brian Kim McCormick*
Ambrose/Cornelius Understudy.....	Riley McNutt
Horace Vandergelder.....	T. Mychael Rambo*
Ermengarde/Ensemble/Irene Molloy Understudy.....	Janely Rodriguez
Cornelius.....	Reed Sigmund*
Ensemble/Dance Captain.....	Elly Stahlke
Ensemble.....	Kyle Weiler*
Dolly Levi.....	Regina Marie Williams*
Ernestina/Ensemble.....	Sally Wingert*
<i>Understudy for Ensemble/Ambrose.....</i>	Alan Bach*
<i>Understudy for Ernestina/Ensemble.....</i>	Deidre Cochran
<i>Understudy for Horace.....</i>	Rodolfo Nieto*
<i>Understudy for Ermengarde/Ensemble.....</i>	Dayle Theisen

THE BAND

Woodwinds Sub.....	Cyrus Collier†
Drums.....	Steve Jennings†
Woodwinds.....	Rich Manik†
Piano.....	Sanford Moore†
Bass.....	Jay Young†

ASL/Audio Described Performance:
Thursday, Feb 16 at 7:30 pm

Open Caption Performances:
Friday, Mar 10 at 7:30 pm
Saturday, Mar 11 at 2:00 pm
Sunday, Mar 12 at 2:00 pm

*Member of Actors' Equity Association, the Union of Professional Actors and Stage Managers

**Member of SDC, the Stage Directors and Choreographers Society, a national theatrical labor union

†Member of Twin Cities Musicians Union, American Federation of Musicians

THE PRODUCTION TEAM

Director & Choreographer.....	Kelli Foster Warder**
Music Director.....	Sanford Moore†
Scenic Designer.....	Eli Sherlock
Costume Designer.....	Rich Hamson
Asst. Costume Designer/Costume Supervisor.....	Amber Brown
Wig, Makeup, & Hair Designer.....	Emma Gustafson
Sound Designer.....	Kevin Springer
Lighting Designer.....	Jeff Brown
Props Designer.....	Abbee Warmboe
Dramaturg.....	Elissa Adams
Music Supervisor.....	Jason Hansen†
Director of Production & Operations.....	Allen Weeks
Associate Production Manager.....	Kyia Britts
Production Stage Manager.....	Shelby Reddig*
Assistant Stage Manager.....	Chloe Volna-Rich*
Assistant Stage Manager.....	Austin Schoenfelder
Technical Director.....	Bethany Reinfeld
Associate Technical Director.....	Eric Charlton
Light Board Operator.....	Corinne Steffens
Audio Supervisor & Sound Board Operator.....	Nicholas Tranby
Scenic Charge.....	Sara Herman
Scenic Artists.....	Anne Henly, Lydia Francis, Lizzie Tredinnick
COVID Compliance Officer.....	Megan Fae Dougherty
Dresser.....	Ash Kaun
Stitchers.....	Erin Connor, Ash Kaun, Bronson Talcott
Substitute Light Board Operator & Swing.....	Andrew Norfolk
Assistant Costume Supervisor/Dresser Swing.....	Bronson Talcott
Stage Management Swing.....	Megan Fae Dougherty*
Carpenters.....	Whitley Cobb, Will Rafferty, Colin Williams
Electricians.....	Dante Benjegerdes, Mike Lee, Sasha Blinnikova, Andrew Norfolk, Shannon Elliott Richard Graham, Kevin Champion, Tristan Wilkes

LETTER FROM THE DIRECTOR & CHOREOGRAPHER

Hello, Dolly! with 12 people on stage and 4 in the band sounds like a bit of a silly idea for those who have known and loved the big beautiful productions of *Hello, Dolly!* over the years. But when it is THESE 12 people and THIS band and THIS fantastic group of theater makers, it's the best news I have heard all year!

We have explored many ideas on our journey through this show. We have talked about how the women in this show take agency over their lives in inspiring ways. We have created a world with intentional racial diversity to remind us that we have all always been there. We have highlighted black business owners as this time period was a highlight in our history. We have recreated these iconic characters and numbers in ways we are excited to share with you all.

But at the core, as usual, I find myself so grateful for my time creating theater at Latté Da with my friend and mentor Peter Rothstein. I love what we discover when we take a big show and reimagine how to tell it in this unique way. We find new opportunities to see ourselves in each character's journey. No person or story or moment fades to the back - each is given its wonderful due. And isn't that how we should go through life? Finding ourselves in others' stories.

With *Dolly* we find a bunch of folks choosing to be brave. To step out of their comfort zone in one way or another and live the life of their choosing. For love, for joy and yes, even for money (which is really just a way to live generously of course). And *Dolly* helps each of our friends find their way and find each other. In the end it is community that is the prize.

During this time when we continue to be so divided as a society, I am encouraged by our *Hello, Dolly!* friends...encouraged to be brave, to love more, to be more generous and to dance whenever, however, with whomever I can.

You too? Holy Cabooses, I hope so!

Kelli Foster Warder
Director & Choreographer



*Pictured (L-R): Regina Marie Williams, Reed Sigmund, T. Mychael Rambo, Regina Marie Williams, Kelli Foster Warder, Brian Kim McCormick, Riley McNutt, Anna Hashizume, Janely Rodriguez.
Photos by Chris Cartwright*

THE VIDEOTAPING OR MAKING OF ELECTRONIC OR OTHER AUDIO AND/OR VISUAL RECORDINGS OF THIS PRODUCTION AND DISTRIBUTING RECORDINGS OR STREAMS IN ANY MEDIUM, INCLUDING THE INTERNET, IS STRICTLY PROHIBITED, A VIOLATION OF THE AUTHOR(S)'S RIGHTS AND ACTIONABLE UNDER UNITED STATES COPYRIGHT LAW. FOR MORE INFORMATION, PLEASE VISIT: <https://concordtheatricals.com/resources/protecting-artists>

ABOUT THEATER LATTÉ DA



THE CAST OF CHRISTMAS AT THE LOCAL (2022). PHOTO BY DAN NORMAN.

Theater Latté Da is in its 25th season of presenting original and reimagined musical theater.

Theater Latté Da is the leading nonprofit professional theater in the Twin Cities that exclusively produces musical theater. Since our inception, TLD has presented 84 Mainstage productions, including 14 world premieres and 14 area premieres. Each has garnered critical acclaim and earned its artists and TLD a host of awards, including: seven IVEY Awards for overall excellence, National Endowment for the Arts, the Gabriel Award for Broadcast Excellence, the American Theater Wing National Theater Company Award and 2019 Drama Desk Award for Unique Theatrical Experience.

Our Mission

Theater Latté Da creates new and impactful connections between story, music, artist, and audience—exploring and expanding the art of musical theater.

Our Values

We believe in work that is bold, inclusive and collaborative; we act with integrity and gratitude.

BOLD We make bold choices in support of our mission and vision, both on and off stage. By illuminating the unseen, giving voice to the unheard, and empathizing with the unknown, we open eyes, ears and hearts.

INCLUSIVE We believe in creating an environment where a diverse group of voices are welcomed to fully participate. We are inspired and strengthened through equitable partnerships. We actively work to make musical theater accessible to everyone.

COLLABORATIVE We believe musical theater to be the most collaborative of art forms, incorporating music, drama, poetry, dance and design. We are inspired and strengthened through inclusive partnerships with artists, organizations and our diverse community, and embody a collaborative spirit in all we do.

INTEGRITY We hold ourselves to the highest standards of artistic and fiscal integrity. We are committed to honesty, equality and transparency in all aspects of our administration and art.

GRATITUDE We are grateful for our artists, audiences, donors, board and staff. We recognize that each individual plays an important role in this organization's success, and we actively seek out opportunities to acknowledge each person's contribution.

Our Commitment to Anti-Racism

Theater Latté Da is committed to recognizing, addressing, and opposing racism and discrimination in our work, art, community, and industry. We affirm our resolve to actively create an anti-racist arts organization demonstrating our commitment through action. We believe in the power and impact of equitable, inclusive environments and value the lived experiences of our collaborators. We will hold each other accountable to honor this commitment, in the rehearsal room, the office, the theater and the board room.

Our Land Acknowledgement

The Ritz Theater sits on the ancestral homelands of many First Nations Tribes, including most recently the Dakota, and the Anishinabe People. We gratefully, and humbly acknowledge the Native Peoples on whose Ancestral Homelands we gather, as well as the diverse and vibrant Native Communities who make their home here today.



Scan the QR code to learn more about Theater Latté Da's commitment to IDEA (Inclusion, Diversity, Equity, and Access).

HELLO, DOLLY! TAKES THE STAGE

“To me, the most wonderful thing about Thornton Wilder’s original play, *The Matchmaker*, was its celebration of Dolly Levi’s return to the human race. The emotion that really moved me was the idea of a widow coming back to life after a long mourning period and then finding the courage to do something really important with her life.”

- *Hello, Dolly!* composer & lyricist Jerry Herman

“I said [to legendary producer David Merrick and book writer Michael Stewart] ‘Do you have any material I could look at to prove to you that I am the right person for this project?’ [Merrick] went to his shelf and took down the first draft of the script and handed it to me. I took it from him and I said, ‘Mr. Merrick, today is Friday. Just give me the weekend. If you let me come back on Monday, I promise I’ll have something to show you.’”



Jerry Herman & Carol Channing, 1964

Those three days were the turning point in my career. I wrote ‘Put On Your Sunday Clothes’ word-for-word and note-by-note, exactly the way it is in the show. I never changed a thing...I produced four songs in two days of the wildest, most intensive writing binge of my life. I wanted this happy, brightly colored American musical more than anything in the world.” - *Jerry Herman*

The writers’ working title for *Hello, Dolly!* was *A Damned Exasperating Woman*. But that changed once they heard Louis Armstrong’s recording of the song ‘Hello, Dolly.’ Jerry Herman said, “Louis Armstrong had not changed a single note or a single word. But by imprinting the song with his own personal style, this incredible musician had made it a piece of authentic jazz. Our song had taken on a life of its own. And it was immediately apparent that [*Hello, Dolly!*] should also be the title of our musical.”

Hello, Dolly! opened in New York on January 16, 1964 to rave reviews, went on to win 10 Tonys, and ran for 2,844 performances. The original Dolly Levi, Carol Channing, was followed by a long succession of significant Dollys, including Ginger Rogers, Martha Raye, Betty Grable, Ethel Merman, and more recently, Betty Buckley, Bernadette Peters, and Bette Midler.



In the fall of 1967, David Merrick made the bold move of closing down the production for a month and then re-opening *Hello, Dolly!* with an all-Black cast led by Pearl Bailey as Dolly and Cab Calloway as Horace Vandergelder. Stewart Lane wrote in *Black Broadway*, “*Hello, Dolly!* would be remembered not only as one of Broadway’s greatest all-time musicals, but also as a major show that switched casts midstream without missing a beat or losing its audience. It seemed that African-American productions had become not just popular but entirely mainstream.”



“One of the peak experiences that I’ve had in theatre-going was to see Pearl Bailey in *Hello, Dolly!*” -*New Yorker* theatre critic, John Lahr

THE GOLDEN AGE OF BLACK ENTREPRENEURSHIP



Madame C.J. Walker and Booker T. Washington at YMCA opening, 1938. (Indiana Historical Society)

Hello, Dolly! is set in the 1890s, a time period recognized by historians as the Golden Age of Black Business.

Emancipation and civil rights permitted Black citizens to operate within the American legal structure starting in the Reconstruction Era. By the 1890s, thousands of small Black-owned business operations had opened in urban areas. Black entrepreneurs (which primarily served Black customers) thrived in a country starkly divided along racial lines. These companies included not only small local shops but also organizations with regional, national and international reach.

The National Negro Business League, founded in 1900 by Booker T. Washington, had over 600 chapters. It reached every city with a significant Black population. By the 1920's, there were tens of thousands of Black-owned businesses. The National Negro Business League had associations representing bankers, lawyers, funeral directors, real estate dealers, merchants and financiers.

Black women played a major role in entrepreneurship during the early 20th century. Maggie Lee Walker became the first woman in the United States to found a bank, establishing the St. Luke Penny Savings Bank in 1902



Bank president, Maggie Lee Walker

to provide loans to members of the African-American community. Annie Turnbo Malone and Madame C.J. Walker (born Sarah Breedlove) became millionaires by creating and selling hair care products formulated for Black women and employed more than 20,000 Black women as sales representatives.



Entrepreneur & philanthropist,
Annie Turnbo Malone

“Money is like manure: it’s not worth a thing unless it’s spread around, encouraging young things to grow.” -Dolly Levi

Taken directly from Thornton Wilder’s play, *The Matchmaker*, the quote above echoes a principle that was at the heart of Black entrepreneurship – the Double Duty Dollar. This term was used in the U.S. from the early 1900s through the 1960s. It promoted the concept of using your money not just to buy goods but also to do good. That any dollar spent in Black-owned business not only purchased a commodity, it supported the community. This principle of collective capitalism is also echoed in one of the core values of Kwanza - the idea of Ujamaa: To build and maintain our own stores, shops, and other businesses and to profit from them together.

UJAMAA - BUILDING BUSINESS & COMMUNITY

Theater Latté Da's production of *Hello, Dolly!* celebrates the spirit of the Black entrepreneurs of the 1890s. Their legacy lives on in the Twin Cities today. Meet some of the Black and BIPOC entrepreneurs who are leading the way and creating community.

ANGIE HALL SANDIFER | Founder/Owner, Angie's Hats



Photo courtesy of Artspace

Minnesota Milliner Angie Hall Sandifer has created fashionable hats from her studio in Lowertown Saint Paul, MN since 2006, after being laid off in 2003 from a job of 30 years in corporate America that she would not have raised her hand to leave, but was glad they picked her. She had the desire to do something else; what that something else was she was unsure of. After being downsized she was provided retraining dollars. **She used the funds for a Desktop Computing class. In that class she learned how to build websites, create brochures, flyers and business cards. As a project for her Desktop Computing class she built the website Angie's Hats.** She loved the hats she was seeing on other sites as she was working on her project. The idea of selling beautiful hats was born. She has designed for the Kentucky Derby at Churchill Downs, Royal Ascot attendees, as well as local

derby parties. She has created for brides and bridal parties in Europe and the U.S. Angie's Hats specializes in custom designed, hand-made hats for all occasions. Angie's Hats has been featured in the Star Tribune, Pioneer Press, Artful Living Lakes- Sotheby's International Realty Magazine, KARE 11, Minnesota Monthly Magazine, as winner of The Hatlife Magazine 2012 Hattie Award, and 2010 Best of the Cities in Minnesota Monthly.

LEARN MORE: www.angjeshats.com

HOUSTON WHITE JR. | Founder, Houston White Goods & The Get Down Coffee Company

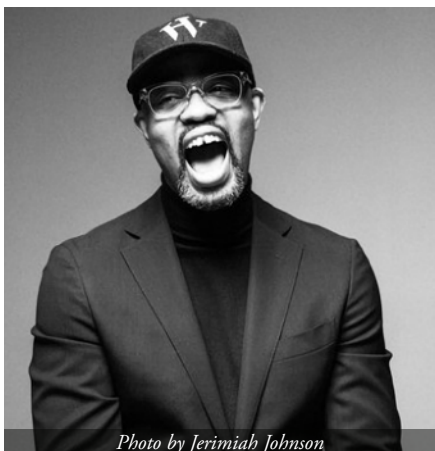


Photo by Jerimiah Johnson

Houston White, Jr. is the founder of Houston White Goods, and creates gathering spaces with a focus on building socioeconomic impact in North Minneapolis. His repertoire of spaces and businesses in Minneapolis include Houston White Goods - which you can also find at Target through 2024 - The Get Down Coffee Company, the Be The Change golf tournament, Camdentown Flats, and many other ventures. As an entrepreneur, designer, advisor, speaker and community leader, Houston is dedicated to creating strength through cultural collision.

"We are partnering with civic and corporate leaders to create a vibrant future for the Camdentown neighborhood of North Minneapolis, building a blueprint of community development done differently, for the people by the people." - Houston White, Jr.

LEARN MORE: www.houstonwhite.co

UJAMAA - BUILDING BUSINESS & COMMUNITY

RAMMY MOHAMED | Founder/Head Designer, Ramadhan Designs



Photo courtesy of ramadhandesigns.com

"My love of refined aesthetics began at an early age, along with my interest in fashion all because of my uncle. Growing up, I was fortunate to witness him create elaborate special occasion dresses for local celebrities and affluent women in my hometown of Finfinnee in East Africa. My curiosity about the arts and fashion eventually led me to attend an affluent college of fine arts, The Art Institute International of Minnesota, where I obtained a degree in Fashion Design. I often incorporate traditional Oromo influences into my modest designs while maintaining modern and contemporary elements. **By using high-quality fabrics and unique textures, I believe I am adding a certain level of confidence and sophistication to my clients that they can't get anywhere else."** - Rammy Mohamed

LEARN MORE: www.ramadhandesigns.com

KEIONA L. COOK | Designer/Owner, Qe'Bella Couture & Founder, Lovely's Sewing & Arts



Photo by Kameron Herndon

Keiona makes dreams come true by bringing client sketches from paper to life. Qe' Bella specializes in women and little girls' custom garments. Qe' Bella Couture designs garments to capture the unique characteristics of each individual's lifestyle. Emphasis is placed on the eminence materials used to produce garments that are high in quality. Qe' Bella appeals to different impulses by diversifying lines and accommodating the ready-to-wear street savvy to high-end couture. Keiona designs everything from a simple pair of jeans to extravagant wedding dresses with hand embroidery and embellishments. Keiona is also the founder of Lovely's Sewing & Arts Collective. **Lovely's Sewing & Arts Collective is a Minneapolis-based 501(c)3 nonprofit, which offers youth and families the opportunity to come together through sewing, yoga, dance, public speaking,**

entrepreneurship, poetry and so many other life skills. These activities are used as tools to teach patience, focus, confidence, leadership and accountability of actions at home, school and everywhere else. LSAC also uses sewing as a tool to teach financial literacy and money management. The youth create, sell and we help them open savings accounts or add to their existing accounts.

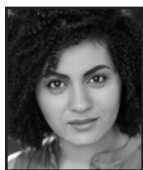
LEARN MORE: www.qebellacouture.com

To read more about some great Black-owned businesses and the work they are doing here in the Twin Cities, scan the QR code with your phone or visit mnblackbusiness.com



BIOGRAPHIES

The Cast



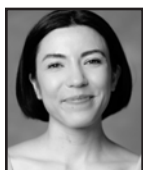
CHINA BRICKEY (IRENE MOLLOY) THEATER LATTÉ DA: NEXT Festival. THEATER: Guthrie Theater: *A Christmas Carol*; Cincinnati Playhouse: *Murder on*

the Orient Express; Jungle Theater: *Redwood*; Theater Mu: *Today is my Birthday*; Park Square Theater: *Pride and Prejudice*, *Romeo and Juliet*; The Ordway: *Smokey Joe's Cafe*, *Mamma Mia*; Children's Theatre Company: *Matilda*, *The Wiz*, *A Snowy Day*; Seattle Children's Theater: *A Snowy Day*; Penumbra Theater: *Girl Shakes Loose*. TRAINING: B.F.A. Acting, Music Minor, Millikin University. UPCOMING: Guthrie Theatre: *Murder on the Orient Express*. ChinaBrickey.com



DEIDRE COCHRAN (UNDERSTUDY FOR ERNESTINA/ENSEMBLE) THEATER LATTÉ DA: *Jelly's Last Jam*. THEATER: Artistry: *Shrek The Musical*,

The Music Man, *Legally Blonde*, *Mary Poppins*; Theatre Elision: *Islander*, *Ruthless*; ORDWAY: Ordway Cabaret: *Rise Up*; Old Log Theatre: *A Gentleman's Guide to Love and Murder*. TRAINING: B.A in Performance, Brenau University.



ANNA HASHIZUME (MINNIE FAY/ENSEMBLE) THEATER LATTÉ DA: *La Bohème*, *Puttin' On The Ritz*. THEATER: Full Circle Theater: *Fire in the*

New World; Artistry: *Mary Poppins*; Open Eye Theatre: *LOG JAM!*; Theatre Elision: *Of Art and Artists*; Lyric Arts: *Sense and Sensibility*; Collective Unconscious Performance: *Into the Darkness*; Mixed Precipitation: *The Clemency of Tito's Tennis Club*, *Dr. Falstaff and the Working Wives of Lake County*, *Philemon and Baucis: Planet in Peril*. OPERA: The Muses Project: *Die Fledermaus*; Fargo-Moorhead Opera: *Don Giovanni*, *Speed Dating*, *Tonight!*; An Opera Theater: *The Sky Where You Are*, *In The Midst of Things*; Minnesota Opera: *La Traviata*, *Thais*; Lyric Opera of the North: *Rigoletto*. 2017 Schubert Club Competition Winner. TRAINING: M.M., University of Minnesota; B.S.O.F, Indiana University Jacobs School of Music. annahashizume.com @annahashizume



JORDAN M. LEGGETT (ENSEMBLE/BARNABY UNDERSTUDY) THEATER LATTÉ DA: *Jelly's Last Jam*. THEATER: Jungle Theater: *Ride the Cyclone*; Artistry:

Footloose; Children's Theatre Company: *Matilda*; Uprising Theatre Company: *Line of Sight*; DalekoArts: *Godspell*. TRAINING: A.S. in Musical Theatre, Florida School of the Arts; B.M. in Vocal Performance, Southeastern Louisiana University. UPCOMING: History Theatre: *The Defeat of Jesse James*.



BRIAN KIM MCCORMICK (BARNABY) THEATER LATTÉ DA: *Twelve Angry Men*. THEATER: Oklahoma City Rep: *The Great Leap*; Ammunition

Theatre: *Revenge Porn*; TheatreSquared: *Tiger Style!*; Quantum Theatre: *Chimerica*; South Coast Rep: *YAGMCB*; San Diego Rep: *Aubergine*; Olney Theatre: *Labour of Love*; NYTW: *Dinner with Georgette*; Pan Asian Rep: *The Emperor's Nightingale*; Full Circle Theater: *Caught*; Theater Mu: *The Korean Drama Addict's Guide...*, *Fast Company*, *Flower Drum Song*; Mixed Blood: *Interstate*; Ordway Center: *Joseph...Dreamcoat*; Children's Theatre Company: *Mulan Jr.*; CDT: *Les Misérables*, *Joseph...Dreamcoat*, *42nd Street*, *The Producers*. FILM: *Daruma*; *The Beach House*. VOICEOVER: Audiobook: *Winston Chu Versus The Whimsies*, *Naked Mole Rat Gets Dressed* (HBO); *Squid Game*, *The King's Affection*, *Pokémon: Sun and Moon* (Netflix); *Yu-Gi-Oh! SEVENS* (DisneyXD); *LastMan, Kingdom* (Crunchyroll); *Regal Academy* (Nickelodeon); *EDF: Iron Rain*, *Modern Combat: Versus*. IG: asian_with_a_camera



RILEY MCNUTT (AMBROSE/ CORNELIUS UNDERSTUDY) THEATER LATTÉ DA: *Twelve Angry Men*, *All Is Calm* (Minneapolis, Off-Broadway, National Tour),

A Little Night Music, *Six Degrees of Separation*, *Ragtime*. THEATER: Artistry: *A New Brain*, *Phantom*, *Les Misérables*, *La Cage Aux Folles*, *Cabaret*, *Fiddler on the Roof*, *Noises Off*; Flying Foot Forum: *Heaven*; Minnesota Orchestra: *Carousel*; Trademark Theater: *The Boy and Robinhood*; Ghoulish Delights: *Prescription Murder*; Old Log Theater: *How I Became a Pirate*; Skylark Opera: *Wonderful Town*,

Candide, *The Vagabond King*; The Ordway Center: *Beauty and the Beast*; Minnesota Opera: Chorus for three years.



RODOLFO NIETO (UNDERSTUDY FOR HORACE) THEATER LATTÉ DA: *All Is Calm*, *La Bohème*, *Candide*, *A Little Night Music*, *Assassins*, *Man of La*

Mancha. THEATER: Mixed Precipitation: *The Magic Flute*, *The Odyssey*; Park Square Theatre: *Riddle Puzzle Plot*; Artistry: *A New Brain*; History Theatre: *Buddy*, *Dirty Business*; Lyric Arts: *Guys and Dolls*; Daleko Arts: *She Loves Me*; Des Moines Metro Opera: *María de Buenos Aires*; Mixed Blood Theatre: *Safe at Home*. UPCOMING: Asolo Rep: *Man of La Mancha*.



T. MYCHAEAL RAMBO (HORACE VANDERGELDER) THEATER LATTÉ DA: *Twelve Angry Men*, *Five Points*. THEATER: Carnegie Hall: *Dvorak's*

Discovery; Tours: *Porgy and Bess* (Europe), *The Wiz*, *Dreamgirls*, *Miss Evers's Boys*, *Dr. King's Dream*, *Thurgood Marshall's Coming*; Arena Stage: *Black No More*; City Theatre: *Birth of the Boom*; Penumbra Theatre: *Black Nativity*, *Jitney*, *Gem of the Ocean*; Guthrie Theatre: *Sunday in the Park*, *Caroline or Change*, *Crowns*; Illusion Theatre: *Miss Evers' Boys*, *Always and Forever*; Mixed Blood Theatre: *Birth of the Boom*; Ordway Theatre: *Beauty and the Beast*, *Joseph*, *Romeo and Juliet*; Minnesota Opera: *Showboat*, *Bok Choy Variation*; Park Square Theater: *Color Purple*; Ten Thousand Things: *Thunder Knocking*. FILM/TV: *D.O.A.*, *Crossing the Bridge*, *Mighty Ducks*, *The Cure*, *The Woolly Boys*, *Justice*, *Laurel Avenue*. AWARDS: 2005 & 2009 Regional Emmy, 2010 Sally Award, 1999 & 2021 McKnight Theater Fellowship.



JANELY RODRIGUEZ (ERMENGARDE/ENSEMBLE/ IRENE MOLLOY UNDERSTUDY) THEATER LATTÉ DA: debut. THEATER: Children's Theatre

Company: *How the Grinch Stole Christmas*, *Diary of a Wimpy Kid the Musical*, *Annie*, *Cinderella*; Ten Thousand Things: *Iphigenia at Aulis*; Artistry: *Shrek the Musical*, *Songs for a New World*; Birmingham Children's Theatre: *Thumbelita*, *Schoolhouse Rock Live!*

TRAINING: B.F.A. in Musical Theatre, Brenau University. UPCOMING: Asolo Repertory Theatre: *Man of La Mancha*.



REED SIGMUND

(CORNELIUS) THEATER LATTÉ DA: *Once, Chicago*. THEATER: Jungle Theater: *Stinkers*; Zephyr Theatre: *Mamma Mia, School of Rock,*

True West. Children's Theatre Company: *How the Grinch Stole Christmas, A Year with Frog and Toad, Annie, The Wizard of Oz, If You Give a Mouse a Cookie*. TRAINING: B.A. in Theatre Arts, University of Minnesota - Twin Cities. UPCOMING: Children's Theatre Company: *An American Tail*.



DAYLE THEISEN

(UNDERSTUDY FOR ERMENGARDE/ENSEMBLE) THEATER LATTÉ DA: debut. THEATER: Ordway: *Disney's Beauty and the*

Beast; CCPA: *A Chorus Line, Anything Goes, Little Women*; Leavenworth Summer Theater: *Pirates of Penzance, Hello Dolly!, The Sound of Music*. FILM: *The Promise of the Butterfly*. TRAINING: BFA Musical Theatre - Dance Emphasis, Chicago College of Performing Arts.



KYLE WEILER

(ENSEMBLE) THEATER LATTÉ DA: debut. THEATER: Broadway: *Hamilton*; World Tour: *West Side Story*; Ordway:

Damn Yankees; Theatre Aspen: *Buyer and Cellar, Mamma Mia*; Director: *Company* with Ashland Productions; Choreography: NYC Jazz Choreography Inc, Ashland Productions, The Great Theatre, Juilliard's Choreographic Honors, Theatre Aspen, Children's Theatre Co. AWARDS: 2019 Achievement in Fine Arts Award by the South Suburban Conference in MN. TRAINING: B.F.A. from The Juilliard School. UPCOMING: Theater Latté Da: *Next to Normal*.



REGINA MARIE WILLIAMS

(DOLLY LEVI) THEATER LATTÉ DA: *Bernarda Alba, Chicago*. THEATER: Guthrie Theater: *The*

Tempest, A Christmas Carol, Dining With the Ancestors, Guys and Dolls, Guess Who's

Coming to Dinner, The Bluest Eye, To Kill a Mockingbird, Othello, The Burial at Thebes, A Streetcar Named Desire, Caroline, or Change, The Falls, The People's Temple, She Loves Me, Oedipus, Crowns; Ten Thousand Things: *Iphigenia at Aulis, Romeo and Juliet, Doubt, Man of La Mancha, Once on This Island*; Mixed Blood Theatre: *ANIMATE, Barbecue, Ruined, Pure Confidence*; Penumbra Theatre/ Theater Mu: *Brothers Paranormal*; People's Light: *Nina Simone: Four Women*; Kenny Leon's True Colors Theatre Company: *Nina Simone: Four Women*; Chanhassen Dinner Theatres: *Sister Act*; Pillsbury House Theatre: *Fannie Lou Hamer: Speak On It!, Scapegoat, Death Tax*; Ordway: *Damn Yankees*; Round House Theatre: *Redshirts*; Milwaukee Rep: *Lady Day...;* Penumbra Theatre: *Dinah Was*; Park Square Theatre: *Nina Simone: Four Women, The Color Purple*. AWARDS: Ivey Award, Helen Hayes Award nomination, McKnight Theater Artist Fellowship. UPCOMING: Guthrie Theater: *Hamlet, Into The Woods*.



SALLY WINGERT

(ERNESTINA/ENSEMBLE) THEATER LATTÉ DA: *Sweeney Todd, Master Class, Six Degrees of Separation, Underneath the Lintel, A*

Little Night Music. THEATER: Guthrie Theater, Alley Theater, Asolo Rep, Arena Stage, Chicago Shakespeare Theater, Yale Rep, ART, McCarter, Arizona Theater Company, Mixed Blood, Jungle, Theater, Pro Rata, most recently *Iphigenia At Aulis* (Ten Thousand Things) and *Two Jews Walk Into A War* (director, Six Points Theater). UPCOMING: Guthrie Theater: *Murder On The Orient Express*.

The Creative Team



KELLI FOSTER

(DIRECTOR & CHOREOGRAPHER) has been working with TLD since 2013. Highlights include choreographing *Ragtime,*

Chicago, and *Once,* and most recently directing and choreographing *Jelly's Last Jam*. Kelli has been a teacher and arts administrator for over 25 years. Her work as a choreographer and director has been seen on stages in the Twin Cities and across the country including The Ordway, Hennepin Theatre Trust, Children's Theatre Company, Artistry, The 5th Avenue Theater, and Asolo Repertory Theatre.

Kelli has produced and created productions internationally in La Paz, Bolivia and Panama City, Panama.



JERRY HERMAN (MUSIC & LYRICS)

Hello, Dolly!, Mame, and *La Cage Aux Folles* are home to some of the most popular, most-

often performed and most successful musical hero(in)es of all time, and have given Jerry Herman (1931-2019) the distinction of being the only composer/lyricist in history to have had three musicals that ran more than 1,500 consecutive performances on Broadway. His first Broadway show was *Milk and Honey* (1961), followed by *Hello, Dolly!* (1964), *Mame* (1966), *Dear World* (1969), *Mack & Mabel* (1974), *The Grand Tour* (1979), *La Cage Aux Folles* (1983), *Jerry's Girls* (1985) and *Mrs. Santa Claus* (1996), a CBS TV special starring Angela Lansbury. *Showtune*, a revue of his life's work, is performing in regional theatres around the country and two of Jerry's classic songs are the emotional highlights of the hit Disney-Pixar film *WALL-E*. His string of awards and honors includes multiple Tony Awards, Grammys, Olivier Awards, Drama Desk Awards, the Johnny Mercer Award, the Richard Rodgers Award, the Oscar Hammerstein Award, the Frederick Loewe Award, the Songwriters Hall of Fame, the Theatre Hall of Fame and, most recently, The Kennedy Center Honors.



MICHAEL STEWART

(BOOK) scored on Broadway the first time when he won a Tony Award for his *Bye Bye Birdie* libretto. He was the librettist for *Carnival*

(Drama Critics Circle Award) and *Hello, Dolly!*, which earned him both a Tony and Drama Critics prize. Stewart also wrote the lyrics for *Barnum* and the book for: *George M!* (with Francine and John Pascal); *Mack & Mabel*; *The Grand Tour* and *42nd Street* (with Mark Bramble); *Harrigan and Hart*; and *I Love My Wife*.



SANFORD MOORE (MUSIC DIRECTOR) THEATER

LATTÉ DA: *Jelly's Last Jam*, NEXT Festival, Ghostlight Series. THEATER: Children's Theatre: *Three*

Little Birds, Last Stop on Market St., The Wiz;

BIOGRAPHIES

Penumbra Theater: *Girl Shakes Loose, Ballad of Emmet Till, I Wish You Love, Black Nativity, Ain't Misbehavin', Dinah Was*; Guthrie: *Parchman Hour, To Kill a Mocking Bird, Disgraced* (composer), *Choir Boy, Crowns*; Ten Thousand Things: *Thunder Knocking at the Door*; Ordway: *Ordway Cabaret, Smokey Joe's Café, 42nd Street*; Park Square Theater: *Nina Simone: Four Women*; Director/Arranger for vocal jazz group, Moore by Four. Music Director at Kingdom Life Church, Mpls.



ELI SHERLOCK (SCENIC DESIGNER) THEATER
LATTÉ DA: *Jelly's Last Jam, Chicago, Assassins*.
THEATER: The 5th Avenue Theatre: *The Wiz*;

History Theater: *Lord Gordon Gordon*; Artistry: *Follies, Little Shop of Horrors, Bad Dates*; Park Square Theater: *Baskerville, The Liar*; 7th House Theater: *The Passage*; Yellow Tree Theater: *Violet, Next to Normal, Clybourne Park, The Rainmaker*; Walking Shadow Theater Company: *The Christians, The Coward*; Lyric Arts: *Guys and Dolls, Revenge of the Space Pandas*; UCLA: *HAIR, Scorched*; CSU: Northridge: *La Boheme*; University of Minnesota: *The Kitchen*; Concordia University: *Luther*. FILM/TV: Art Dept. Assistant for *Spiderman: No Way Home* (AP), *Doctor Strange in the Multiverse of Madness: LA Unit, Moon Knight* (AP). TRAINING: UCLA, University of Michigan. Eli is a lecturer at UCLA in the Department of Theater and Drama. www.elisherlock.com



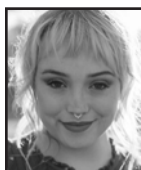
RICH HAMSON (COSTUME DESIGNER) THEATER
LATTÉ DA: *La Boheme, Spring Awakening, Cabaret, C., The Light in the Piazza, Gypsy, Floyd Collins, Man of*

La Mancha, A Christmas Carole Petersen, Evita.
THEATER: Chanhassen Dinner Theatre, resident costume designer with over 32 productions; Children's Theatre: *Annie, Shrek, Mulan, Disney's High School Musical*; The Guthrie: *Other Desert Cities, Lake Hollywood, Thief River, A Body of Water*; The Minnesota Opera: *Così fan tutte*; Illusion Theatre: *Snow, The Warrior Within*; The Jungle: *Orson Wells presents Moby Dick, The Blue Room, Souvenir*; Park Square Theatre: over 15 productions including *A Tale of Two Cities, The Heiress* and many more.



AMBER BROWN (ASSISTANT COSTUME DESIGNER/COSTUME SUPERVISOR) THEATER
LATTÉ DA: *Christmas At The Local*. THEATER:

Pillsbury House Theatre: *bull-jean, Great Divide III: She Persists, West of Central, Great Divide II: Plays on the Politics of Truth, Almost Equal To, The Great Divide: Plays for a Broken Nation*; Illusion Theater: *Five Minutes of Heaven*; Mixed Blood Theatre: *Interstate, Autonomy, Corazón Eterno, Agnes Under the Bigtop*; Old Log Theater: *The Play That Goes Wrong*; Park Square Theater: *Aubergine*; Gremlin Theater: *Journey's End*; Bucket Brigade: *Life Goes On*; Full Circle Theater: *Under This Roof*; 7th House Theater: *Rhinoceros*; Macalester College: *Distracted, 12 Ophelia's, Accidental Death of an Anarchist*.



EMMA GUSTAFSON (WIG, MAKEUP, & HAIR DESIGNER) THEATER
LATTÉ DA: debut. THEATER:

Minnesota Opera: *Daughter of the Regiment, Rinaldo, Anonymous Lover*; Jungle Theater: *Cambodian Rock Band*; Ten Thousand Things: *Thunder Knocking On The Door*; Children's Theatre Company: *Diary of a Wimpy Kid, Annie*.
TRAINING: B.A. in Theatrical Design, Augsburg University; Wig Apprentice, Santa Fe Opera; Cosmetology License, Aveda Institute Minneapolis.



KEVIN SPRINGER (SOUND DESIGNER) THEATER
LATTÉ DA: *Bernarda Alba, A Christmas Carole Petersen, Man of La Mancha, Once, To Let Go And Fall*. OPERA:

Minnesota Opera: *Dead Man Walking, Dinner at Eight*. THEATER: Daleko Arts: *The Thin Place*; In the Heart of the Beast: *Make Believe Neighborhood*; New Native Theater: *The Unplugging*; Penumbra Theater: *Dutchman, The Owl Answers, This Bitter Earth*; Red Eye Theater: *Sounds Inside*; Theater Mu: *peerless*; Trademark Theater: *The Hollow*; zAmya: *A Prairie Homeless Companion*.
TRAINING: MFA in Theatre Design and Technology, University of Minnesota - Twin Cities.



JEFF BROWN (LIGHTING DESIGNER) THEATER
LATTÉ DA: debut. THEATER: The Phoenix Theatre Company: *Airness*; Arizona Jewish Theatre

Company: *Beau Jest, Berlin to Brooks*; Circa 21 Dinner Playhouse: *Mamma Mia!*; Artistry: *Joseph and the Amazing Technicolor Dreamcoat, She Loves Me*; Stages Theatre: *Mary Poppins Jr., Elf Jr.*; Duluth Playhouse: *Smokey Joe's Café, Ragtime, Footloose, Annie, Spamalat, 42nd Street, Our Town, The Full Monty, Doubt, Beauty and the Beast, My Fair Lady, A Funny Thing...Forum*; Straw Hat Players: *Guys and Dolls, Hello Dolly!, Wedding Singer, Fiddler on the Roof*. Also multiple scenic designs throughout the region. TRAINING: B.A. in Theater, Minnesota State University Moorhead.



ABBEE WARMBOE (PROPS DESIGNER) THEATER
LATTÉ DA: *Christmas at the Local, Merrily We Roll Along, Twelve Angry Men, Jelly's Last Jam, La Boheme,*

Bernarda Alba, All Is Calm, Chicago, To Let Go and Fall, Hedwig and the Angry Inch, A Little Night Music, Once, Underneath the Lintel, Five Points, Assassins, Man of La Mancha, Six Degrees of Separation, Peter and the Starcatcher, A Christmas Carole Petersen, Ragtime, Gypsy.
THEATER: Pillsbury House Theater: *The Bull-Jean Stories, What to Send Up*; History Theater: *The Root Beer Lady*; Guthrie Theater: *The Little Prince, Emma, Sweat, Vietgone*.
Abbee is a 2020-2021 McKnight Theater Artist Fellow at the Playwrights' Center.



ELISSA ADAMS (DRAMATURG) THEATER
LATTÉ DA: *C., Lullaby, Assassins, Five Points, Underneath the Lintel, Once, A Little Night Music,*

Hedwig and the Angry Inch, To Let Go And Fall, Chicago, Bernarda Alba, Jelly's Last Jam, Twelve Angry Men: A New Musical, Merrily We Roll Along, Christmas At The Local, NEXT Up & NEXT Festival (Producer).
THEATER: Director of New Play Development at Children's Theatre Company (1998- 2017); Sundance Theatre Lab; Playwrights' Center; TRAINING: MFA in Dramaturgy, UC San Diego.



JASON HANSEN (MUSIC SUPERVISOR) THEATER LATTÉ DA: *Christmas At The Local, Merrily We Roll Along, Jelly's Last Jam* (orchestrations), *Bernarda*

Alba, Hedwig and the Angry Inch, A Little Night Music, Once, Assassins, C., Into The Woods, Our Town, Aida; NEXT Festival. THEATER: Children's Theater Company: *Cinderella, How The Grinch Stole Christmas, Dr. Seuss's The Sneeches*; Mixed Blood Theater: *Passing Strange, Next To Normal, Avenue Q*; Guthrie Theater: *Guys and Dolls, Othello*; History Theater: *Sweet Land*; Stages Theater Company: *Tuck Everlasting*; Theater Mu: *Twelfth Night, A Little Night Music*; Chanhassen Dinner Theaters: *Newsies*; Ten Thousand Things: *Romeo & Juliet*; Arkansas Repertory Theater: *The Gift Of The Magi*; Northern Sky Theater, Illusion Theater, Artistry, TigerLion Arts, Open Eye Figure Theater, Jungle Theater, the MN Fringe Festival, the Hennepin Theater Trust; AWARDS: 2018 MN Theater Award (Latté Da's *Assassins*).

SHELBY REDDIG (PRODUCTION STAGE MANAGER) THEATER LATTÉ DA: *Christmas at the Local, Merrily We Roll Along, Jelly's Last Jam, La Bohème, Puttin' on the Ritz*. THEATER: Children's Theatre Company: *Snow White, The Hobbit*; MN Opera: *Albert Herring*; Mixed Blood Theatre: *Prescient Harbingers, The Mermaid Hour: Remixed*; Perseverance Theater: *A Christmas Carol*; Jungle Theater: *Fly By Nighr: The Musical*; Stages Theater: *Charlotte's Web*. TRAINING: BA in Theater and English from St. Olaf College.



CHLOE VOLNA-RICH (ASSISTANT STAGE MANAGER) THEATER LATTÉ DA: *Christmas At The Local, NEXT Festival 2022, Jelly's Last Jam*. THEATER:

Illusion Theater: *Present (Tour), Real Stories/ One Stage*; The Moving Company: *Anamnesis, What If?*; Children's Theatre Company: *Glow-a-GoGo Curtain Call Ball (Production Asst.), Sideways Stories from Wayside School, Carrie the Musical*; The Guthrie: *Twelfth Night (Production Asst)*, BFA Senior Showcase, Production Management Fellow; Walking Shadow Theatre Company: *Cabal: A Play with*

Puzzles; Lakeshore Players Theater: *Beehive*; Hennepin Theatre Trust: *Spotlight Showcase*. FILM: [Do Not Air] Productions, RK Productions (Production Asst and Stand-In), Super Bowl LVII (Credentialing Coordinator), *Food Baby* (Production Asst.) UPCOMING: *Ten Thousand Things: Emilia*.

AUSTIN SCHOENFELDER (ASSISTANT STAGE MANAGER) THEATER LATTÉ DA: (Assistant Stage Manager) *Christmas At The Local, Merrily We Roll Along, Jelly's Last Jam*. THEATER: Chanhassen Dinner Theaters: (Spotlight Operator) *Footloose, The Music Man*; Park Square Theatre: (Asst Stage Manager) *Holmes and Watson, (Run Crew) The Rocky Horror Show*; The Duluth Playhouse: (Asst. Stage Manager) *Sweeney Todd*; The Round Barn Theatre: (Production Stage Manager) *Mamma Mia, Plain and Fancy, Annie*; Zenith City Horror: (Stage Manager) *Hedwig and the Angry Inch*; Prairie Repertory Theatre: (Stage Manager) *The Sound of Music, Smokey Joe's Cafe, Hairspray, Sister Act*. TRAINING: BFA in Technical Theatre from the University of Minnesota Duluth.



BETHANY REINFELD (TECHNICAL DIRECTOR) describes Technical Direction as "Building worlds for characters to come to life in". She

holds a M.F.A in Theater and Drama with a specialization in Technical Direction from UW - Madison. She also has a B.F.A. in Design Tech with an emphasis in Technical Direction and Scenic Design from UMD. She has worked with Mixed Blood Theater, Normandale Community College, Yellow Tree Theater, Jungle Theater and Sesame Street Live/VEE Corporation to list a few.

NICHOLAS TRANBY (AUDIO SUPERVISOR) THEATER LATTÉ DA: *Twelve Angry Men, Jelly's Last Jam, La Bohème, All Is Calm, Once, Chicago, Hedwig and the Angry Inch, Candide, A Little Night Music, Man of La Mancha, Peter and the Starcatcher, Ragtime, Gypsy, Assassins, Five Points*. THEATER: Sound, Video and Lighting Associate at Children's Theatre Company for 4 years including *Shrek: The Musical, Pinocchio, Alice in Wonderland* and *Robin Hood*; Head Audio Engineer for international tours of *The Wedding Singer* and *The Wizard of Oz*; Other venues have included Guthrie Theater, Williamstown Theatre

Festival, and Cincinnati Playhouse in the Park. TRAINING: The College-Conservatory of Music at University of Cincinnati.

JESSICA MROVKA (LIGHTING SUPERVISOR) THEATER LATTÉ DA: *Twelve Angry Men, Jelly's Last Jam, La Bohème, All is Calm*. VSTAR ENTERTAINMENT: Electrics Shop Manager (2016-2020): *Trolls Live!, Paw Patrol Live!: Race to the Rescue, Paw Patrol Live!: The Great Pirate Adventure, Nick Jr. Live!* VILAR PERFORMING ARTS CENTER: Master Electrician/House Lighting Designer (2013). VEE CORPORATION: Electrician/Rigger: *Sesame Street Live! 1,2,3 Imagine and Elmo's Green Thumb, My Little Pony Live!* TRAINING: B.A. in Theater from the University of Wisconsin-Green Bay.

The Band



STEVE JENNINGS

(DRUMS) has 35 years of experience playing rock, funk, jazz, gospel, country and blues music. He plays with vocal jazz artists

Moore By Four, blues funk group Left Wing Bourbon and leads the Little Feat tribute group Jambalaya. Jennings is also found subbing in with many groups including: Post Traumatic Funk Syndrome, the Craig Clark Band, Dr. Mambo's Combo, Sheridan Zuther, the Thunderheads and Blue Water Kings. His drumset work in the theater includes *Jelly's Last Jam* and *Twelve Angry Men* (Theater Latté Da); *The Parchman Hour* (Guthrie Theater); *The Wiz* and *Last Stop On Market Street* (Children's Theater); *Black Nativity* (Penumbra Theater); and the CASTastrophe series (Northfield Arts Guild). As a self-taught musician, Steve is always in search of new collaborations and creative experiences.



RICH MANICK

(WOODWINDS) is a freelance musician, woodwinds, arranger, and recording artist living in the Twin Cities. He performs with many local

and national artists in a variety of musical styles. Rich currently tours with The Midtown Men, a concert experience featuring the 4 original cast members of *Jersey Boys*. Recent recordings featuring his playing include albums by Kenne Thomas, Joyann Parker, The Freier Department, and Leslie Vincent's *These*

BIOGRAPHIES

Foolish Things, which includes his arrangement of "Ain't Misbehavin'." Additional studio work includes recording sessions for Nashville-based recording artist Jessie Keys, synch music for TV and online shows, and advertising, as well as ESPN and Credit Karma. Notable live performances include *Rainy Days and Mondays*; *A Tribute to the Music of The Carpenters*; *Duke Ellington's Nutcracker* - featured performer/soloist. Additionally, Rich has past performances which include artists Grace VanderWaal, The Temptations, The Four Tops, Clark Terry, and Jack McDuff.



JAY YOUNG (BASS) is one of the Twin Cities' 'first call' bassists. He is a freelance performer and educator involved in a vast array of projects, working with

national and international artists. He has performed at the Guthrie Theater, Ordway Center, Illusion, and Penumbra Theatre. Jay has also been a featured performer at the Lincoln Center, Juilliard School, Boston Symphony Hall, The Blue Note, Umbra (Italy), Espoo (Finland), and Tejo (Portugal). He has shared the stage with Ray Brown, James Moody, Dizzy Gillespie, T.S. Monk, Grover Washington Jr., Dave Brubeck, Ron Carter, Buster Williams, Bobby Lyle, Eddie Daniels, the Minnesota Orchestra, Omaha Symphony, Phil Upchurch, Jennifer Holiday, Harry Connick Jr., Jay Leno, Paul Bollenbeck, Reverend Al Green, Bobby McFerrin, Jefferson Starship, Carole King, and Ray Charles, Kevin Mahogany, Joe Lovano, Ernie Watts, Tim Ries, Sony Holland, Marvin "Smitty" Smith, and many others.

Special Thanks

Artistry

Chanhassen Dinner Theatres

Dancing Fair

Las Estrellas Dual Language School &

Timothy Fleming

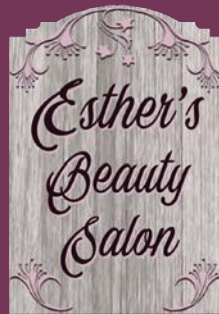
Sheridan Clinic

Paula Reinfeld

The real-life business owners behind the storefront signs on our stage



Prince Albert Honeycutt learned the barbering trade from a fellow Civil War veteran and then opened his own business in downtown Fergus Falls in 1884.



Director & Choreographer Kelli Foster Warder's grandmother owned and operated Esther's Beauty Salon in Atlantic City.

Scenic design by Eli Sherlock

THE VIDEOTAPING OR MAKING OF ELECTRONIC OR OTHER AUDIO AND/OR VISUAL RECORDINGS OF THIS PRODUCTION AND DISTRIBUTING RECORDINGS OR STREAMS IN ANY MEDIUM, INCLUDING THE INTERNET, IS STRICTLY PROHIBITED, A VIOLATION OF THE AUTHOR(S)'S RIGHTS AND ACTIONABLE UNDER UNITED STATES COPYRIGHT LAW. FOR MORE INFORMATION, PLEASE VISIT:

<https://concordtheatricals.com/resources/protecting-artists>



CONCESSIONS IS BACK!

Enjoy our selection of beer, wine, non-alcoholic beverages and snacks!



CELEBRATING
25 YEARS

THEATER
LATTÉ
DA
THEATER MUSICALLY

As we celebrate our 25th anniversary season, we're taking a look back at the last 25 years from Theater Latté Da's earliest days at the intimate Loring Playhouse to award-winning sold-out shows here at the Ritz Theater. Follow along this season as we highlight our productions from 1998 to present in each of our programs throughout the year!

SEASONS 11 - 15

* World Premiere **Area Premiere

SEASON 11 • 2008-2009

OLD WICKED SONGS | Guthrie Theater, Dowling Studio | 2008
A CHRISTMAS CAROLE PETERSEN | Ordway McKnight Theatre | 2008
ALL IS CALM | Pantages Theatre | 2008
PASSAGE OF DREAMS* | Southern Theater | 2009



SEASON 12 • 2009-2010

THE FULL MONTY | Ordway McKnight Theatre | 2009
ALL IS CALM | Pantages Theatre | 2009
VIOLET | Guthrie Theater, Dowling Studio | 2010

SEASON 13 • 2010-2011

EVITA | Ordway McKnight Theater | 2010
ALL IS CALM | Pantages Theatre | 2010
SONG OF EXTINCTION** | Guthrie Theater, Dowling Studio | 2011
STEERAGE SONG* | Fitzgerald Theatre | 2011

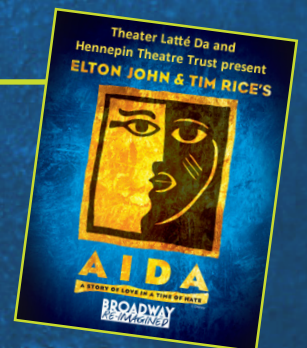


SEASON 14 • 2011-2012

THE 25TH ANNUAL PUTNAM COUNTY SPELLING BEE | Ordway McKnight Theatre | 2011
ALL IS CALM | Pantages Theatre | 2011
BEAUTIFUL THING | The Lab Theater | 2012
SPRING AWAKENING | Rarig Center Stoll Thrust Theatre | 2012

SEASON 15 • 2012-2013

COMPANY | Ordway McKnight Theatre | 2012
ALL IS CALM | Pantages Theatre | 2012
ELTON JOHN & TIM RICE'S AIDA | Pantages Theatre | 2013
THE LIGHT IN THE PIAZZA | Ordway McKnight Theatre | 2013
NEXT FESTIVAL 2013 | The Lab Theater | 2013



THANK YOU FOR YOUR GENEROUS SUPPORT OVER THE PAST 25 SEASONS.
PLEASE CONSIDER A GIFT TODAY AT LATTEDA.ORG/DONATE AND HELP SUPPORT THE NEXT 25!

THEATER LATTÉ DA DONORS

Thank you for your commitment to our 25th season. Theater Latté Da is one of only a few theaters in the country dedicated solely to producing and presenting new and adventurous musical theater that speaks to contemporary audiences and advances the art of musical theater. We truly could not do this without the generosity of our many individual and institutional donors. Thank you for your support.

INSTITUTIONAL SUPPORT

MCKNIGHT FOUNDATION



NAMT
NATIONAL ALLIANCE FOR
MUSICAL THEATRE



This activity is made possible by the voters of Minnesota through a Minnesota State Arts Board Operating Support grant, thanks to a legislative appropriation from the arts and cultural heritage fund.

The Scrooby Foundation



NATIONAL
ENDOWMENT for the ARTS
arts.gov



THE SHUBERT
FOUNDATION INC.

Prospect Creek
Foundation



The Nara Fund

Elizabeth C. Quinlan
Foundation Inc.

HGA



INDIVIDUAL SUPPORT

Theater Latté Da's mission is to create new and impactful connections between story, music, artist, and audience by exploring and expanding the art of musical theater. We are guided by our values that our work be bold, inclusive and collaborative, and strive to act with integrity and gratitude both on and off the stage. By illuminating the unseen, giving voice to the unheard, and empathizing with the unknown, Theater Latté Da strives to open eyes, ears, and hearts.

Please consider a tax-deductible contribution to Theater Latté Da today and join us in bringing great musical theater to life. Learn more about support opportunities at latteda.org/ways-to-give or email hilary@latteda.org for more information.

Grand Finale (\$25,000 and above)

Carol and Kim Culp
C. Curtis Dunnavan Fund*
Dr. Tom Knabel and Kent Allin
Kathy and Allen Lenzmeier
Marti Morfitt and Patrick Weber
Rita and Ben* Olk

Kathleen and Paul Rothstein
Margaret V.B. Wurtele
The Thomas and Julianne Youngren
Foundation

Curtain Call (\$10,000-\$24,999)

Anonymous
Jane and Ogden Confer
Ingrid and Chris Culp
David Feroe and Linda Svitak
Sandy and John Hey
Dennis and Nora Hunchar
Penny Meier
Jennifer Melin Miller and David Miller

Ann and Pat Ryan
Cara Sjodin and Scott Stensrud
John Sullivan
David A. Wilson and Michael J. Peterman
Fremajane Wolfson
Patricia Zalaznik

Eleven O'Clock Number (\$5,000-\$9,999)

Jan and Greg Aplin
Nathan Dungan and Susan Hawks
Ron Frey and Steven Thompson
The Dean Greenberg Family Fund in honor
of Fremajane Wolfson
Nancy Jones
Christine Larsen and Scott Peterson
Barbara Larson

Carol Lichterman
Mary and Mark Maher
Margery Martin and Dan Feidt*
James Olson
David Pote and Linda Tapsak
Philip Randall
Gary Reetz
Ken and Nina* Rothchild

Colleen C. Ryan and Tom Merz
Sharon Sampson
Marjorie and Irving Weiser
Carol and Tom Windfeldt
Kevin Winge and Kevin Shores
Dick and Diane* Wright

**In remembrance*

Show Stopper (\$1,500-\$4,999)

Anonymous (2)
Elissa Adams and Michael Margulies
Mary Alberts
Albrecht Family Foundation
Ward and Kathleen Armstrong
Jerald Barnard
Barbara Brin and John Beal
Patricia A. Beithon
Les Bendtsen and Rick Buchholz
E. Thomas Binger and Rebecca
Rand Fund of The Minneapolis
Foundation
Ray DeSpiegler and Michael Birch
Jeffrey D. Bores and Michael
Hawkins
Priscilla Brewster
William and Andrew Collis-Prather
Gretchen and David Crary
Fran and Barb Davis
David and Margaret Dines
Robert Dingmann
Joe Dowling and Siobhán Cleary
Carol M. Downie and Gregory J.
Thomas

Mary Anne Ebert and Paul Stembler
Karla Ekdahl and Peter Hutchinson
Meghan and Sean Elliott
Steve Euller and Nancy Roehr
Mary Beidler Gearen
Dr. Lynn Glesne
Sandra and Edmund Hall
Diane Harder and Thomas Eckstein
Lorraine R. Hart
Jean and Jim Hartman
Margie and Tom Hebig
Addicks Hoch Fund of The
Minneapolis Foundation
Lisa and Dan Hoene
Joe Holmers
Peter Hyman and Gisela Corbett
Richard Ihrig and Colleen Cooper
Sandi and Jim Jensen
Miriam and Erwin Kelen
Stan Kolden and Glyn Northington
Jane Lansing
David and Sheila Lein
James Lockhart and Janie Mayeron
Sonny and Amy Miller

Linda and Jim Milow
Tom and Conchy Morgan
Curt D. Nelson
Neil Neumann and Sandy Spidel
Neumann
Dr. Katherine J. Nevins
Judy Nobles
Mary Weber Nord
Jennifer and Jay Novak
Sandra Overland
Patti Pinkerton
John Polta and Anne Tuthill Polta
Prospect Creek Foundation
Peter Rothstein and Omar Guevara
Soto
Tom and Molly Rothstein Family
Susan and John Ryan
Kerry Sarnoski and Susan Lowum
Marjorie and Mark Schroeder
Ann and Tom Stanley
Lorri Steffen and Paul Zenner
Marcia and John Stout
Brian and Carrie Svendahl
Rabindra Tambyraja, MD

The Turcotte Family Fund
Michael and Terri Uline
Bill Underwood and Chris Everett
Libby and John Utter
Dianne Van Tasell and Steven
Eggimann
Erin and Mark Vannelli
Bill Venne and Douglas Kline
The LTC Janis Verruso Charitable
Fund
Gregory L. Vilmo
David C. Warner
Ruth and David Waterbury
Ann Wynia
Peter Zenner

**In remembrance*

Entr'acte (\$500-\$1,499)

Anonymous (2)
Bruce and Carla Adams
Theresa Alewine
Jerome and Joy Amel
Charles Anderson and Laurie
DeMartino
Nancy E. Anderson
Angelica Family Charitable Fund
Scott Appelwick and Edward
Sootsman
Stuart Appelbaum and Jean King
Annette Atkins
Marcia Aubineau
Michael Bahr and Morrie Hartman
John Bale
Stan and Cindy Bandur
Sarah and Mick Bauer
Thomas Beimers
Kris Berggren and Ben Olk
David and Chelsea Berglund
Bill Bertram
Christopher Bineham and Harrison
David Rivers
David Bjork and Jeff Bengtson
Susan S. Boren and Steve King
Suzanne Born and Carol Cummins
William and Rita Bourne
Al Bradley
Mary Brady
Carson Brooks
Cheryl Brown
Ann Brownlee
Stephen Bubul
Barb and Tom Burke
Jimmy Burnett
Scott Cabalka
Jeannie Campbell
Kathleen and Paul Campbell
Virginia and Stuart Campbell
Peter Carlsen and Sylvia Frank
Jane Carlstrom
Stacy - Kathie Christensen
Angela and Neil Christy
Michael and Mary Conklin
Colleen Cooper
Tiffany Cooper-Allen
Jeanne and David Cornish
Thomas and Mary* Darnall
Ryan Daro and Ryan Kielbasa
Carl Deeken
Holly Denis
James Detmar
Thomas* and Mary Lou Detwiler
Sandy Doll and Ron Christenson
Gerald Dove
Jennifer Patti Duffy and Sean Duffy
Joe and Lois Duffy
Heidi and Patrick Edwards

Sharon Engel
Doris Engibous and Cathy Ryan
John J. Erickson
Kay Erickson
Kurt and Sarah Erickson
Lucas Erickson Fund of The
Minneapolis Foundation
Nancy Evert
Kittie Fahey
David Ferris
Dennis and Joyce Findley
Stephen Fischer
Gerald Foley
Kelli Foster Warder
Barbara Frame
Heather and Bill Froehlich
Matt Fulton
Barbara and Bob Gaertner
Gayle C. Gaskill
Elaine Gaston and Mark Scannell
Jim Gearen and Todd Nelson
Lisa Gehrig
Janice Gepner and Eric Newman
Donna H. Gies
Brian Gilligan
Jim Gindorff
Ben and Patty Grabski
Christine and Bill Griffith
Roger Haase and Michael Birdsall
Peggy Hall and Lee Barry
Kath Hammerseng and Mo Kennedy
Nicole Hanover
Dr. Jo-Ida C. Hansen
Jay Harkness and Jean Storlie
Ann Harrington and Chris
McPartland
James Haskins
Kate Haugen and Carlton Hunke
Nancy Hedman and Dale Connelly
John Hering and Matt Vonk
Christopher Hermann and Brian
Pietsch
Joanne and Allen Hinderaker
Jim and Mary Holland
Mike Jereczek and Jan Sigmund
Bruce and Jean Johnson
Denise Johnson and Karl Erickson
Patricia Johnson and Kai Bjerkness
Steve and Debbie Johnson
Steve Johnson and Susan Iverson
Russell Kaplan and Elisa Spencer-
Kaplan
Ed and Martha Karels
Kurt and Gina Kastel
Tim Kellar
Matt Kiser and Chris Nichol
Steve and Candace Koslow
Deirdre and Wes Kramer

Sue Kratsch
Suzanne Tacheny Kubach
John Kundtz and Thomas Amon
James Kunz
Al Kvaal
Greg Kvam and Pat Johnson
Rebecca and Andrew Lahl
Sally Lannin
Kate and Greg Lawson
Marcia C. Leatham
Jane Letourneau and John Frey
Diana and Kenneth Lewis
Judy and Steve Lewis
David and Susan Lima
Jeff Lin and Sarah Bronson
Rebecca Loader and Michael Ritchie
Mary and Doug Logeland
Larry Loll
Ron Lotz and Randy Hartten
Dennis Louie
Peggy and Dave Lucas
Laurie and Todd Macgregor
Pat and Sara Mack
David and Marilee Mahler
Bob and Deb Mans
Susan L. Maples
Ruth B. Markowitz
Paul and Julie Mattson
Susan McCarthy
Peg McKee and Dean Adams
Lisa McLean
Mary H. and J. Milo Meland
Family Fund of The Minneapolis
Foundation
Gretchen Alberts Mellies
Douglas and Cindy Merrigan
Dan and Mary Miesle
David Miller and Mary Dew
Marianne McGrath Mills and Steven
A. Mills
Jodi and Mike Mooney
Alfred P. and Ann M. Moore
David and Leni Moore Family
Foundation
Peter D. Moore
Kim and David Motes
Joanne Mullen
Peter and Karla Myers
Nicholas Naumann and Joe
Chadwick
Dirk and Laura Nelson
Joan Nelson
Nicholson Family Foundation,
Pondie and Mark Taylor
Karle and Diane Nolte
Ann Novacheck and Skip Durocher
Ann Murphy O'Fallon
R&D Oliveira Foundation

Ella and Lee Ostendorf
Philip Oxman and Harvey Zuckman
Micheal and Mary Parenteau
Raymond and Judith Pascoe
Jim Payne
Jeanne and James Peltier
Karlyn Peterson and Gavin
Wilkinson
Deanna Phillips
Shannon Pierce and Rachael Kroog
Patricia Ploetz
Nick and Judy Priadka
Nancy and James Proman
Denise Prosek and Milton Ferris
Quiring Family Fund of The
Minneapolis Foundation
Mariana Quiroga
Fred Quirsfeld and Linda Campbell
Pat and Gene Radecki
James and Susan Ramlet
Gary and Susan Rappaport Family
Charitable Fund
Laura E. Rathe
Maria and David Reamer
Megan Reardon
John Seeger Reay and Karen Hanson
Sadie Reiners
Jonathan Riehle and Angela M.
Bohmann
Kenneth and Beth Roering
Jaime A. Roman and Jim Bernier
Bud and Kathy Rooney Family Fund
Peggy and Bill Roush
Jean Ryan
Sandra Ryan
Kenneth and Kathy Sabota
Sue Salmela and Paul Burnett
Mary L. Sandberg
Linda and Steven Sandvig
Carol B. Schirmers
Paul Schumann
Miriam Seim
Tom Senn and Woody Manion
Daniel and Emily Shapiro
Kris Lang-Shasky and John Shasky
Sue Shepard
Michelle Sherman
Mariana and Craig Shulstad
Rolf* and Janet Skjei
Jeff Slywka
Steven and Karen Sonnenberg
Roxanne and Bill Soth
Susan Stable and David Drueding
Howard Stacker
Ellen Stanley
Lynne Stanley
Toya Stewart Downey
Dana and Stephen Strand

INDIVIDUAL SUPPORT

MJ Sullivan
Kari Groth Swan
Ron and Margaret Tabar
Janet and Howard Tarkow
Jean Taylor
Jennifer, Daniel, Raina, and Zoey Tenenbaum
Sue Thielke
Douglas Tiede

Lori Tolonen
Paula Vesely
Jeanne Voigt
Michael Wagner
Cathy and Stan Waldhauser
Peter Wampole
Corliss Weeks
Stewart and Christina Widdess
Mark Williams

Paige Winebarger
John and Karen Winkelman
Peter and Sue Wyckoff
David Young and Edward Williams, Jr.
Jane U. Young
Julie and Charles Zelle
Jane Zilch
Nancy Zingale and Bill Flanigan

Margaret Zverinova

Overture (\$100-\$499)

Anonymous (17)
Mary Amoth
Frank and Barb Abramson
Sharon Adams
Tom and Cindy Adamson
DeEtte Allen
Grant Amadio
Lisa Amman and Phil Steger
Kathren Amoth
Amy Andersen
Anita M. Anderson
Dennis and Kathleen Anderson
Gretchen Anderson
Renee and David Anderson
Rochelle Anderson and David Smeltzer
Joe Andrews and Scott Benson
Julie Andrus
Greg Anthony
Nancy Antin
Constance Archea
John Arechar
Jennifer and Joseph Armitage
Linda Aronson
Brian Assleson
James Assali and Michael Mauch
Elizabeth Athorn
Dan Avchen and David Johnson
William Bahl
Georgia Bailey
Sandra and Barry Baines
Douglas Baldwin
Maria Bales
Thomas Barber
Daniel Barnes and Elaine Wilson
Kate and Roger Barr
Karen Barstad
Daniel Baseman
Cheryl Bates
Roger Battreall
Mary and Bruce Bean
Robert and Mary Beck
Patricia Benson and Phil Strait
Ruth Ann and Jim Benson
Dan Berg and Welcome Jerde
Joan Berg
Lindsay Berger
Scott Berger
Brent Berheim
Judy and Dennis Berkowitz
Angela and George Berhardt
Paul Berning
Susan Bernstein
Brad Betlach and Peter Carlson
Tim and Beth Beutell
Chris Bewell
Marjolijn Biolders
Marilyn Bieder
Ann M. Biggar
Bill and Barbara Bittman
Paul and Marcia Bjerke
Michelle Blaeser and Gene Bard
Robert and Linda Blakesley
Ann Blatti and David Gibson
Margie Boler
Lara Bolton
Allen Borcharding
Rosanne Borscheid
Carol Bossman
Kate and John Boyle
Larry J. Brandts
Craig Brattebo
Mary Brauer
Judith and Arnie Brier
Carol and Steve Broback
Joanne and Drew Brockington
Peter Brosius and Rosanna Staffa
Lisa Brosseau and Allen Giles
Cynthia Brown
Sally W. Brown
Natasha Brownlee
Jessica Broyles
Carol and Richard Brozic
Philip and Carolyn Brunelle
Shawn Bryant and Michael Grouws

Fran Buesgens
Carol Bufton
Jack Burbidge in loving memory of his wife Nancy*
Sheryl and Mike Burkhardt
Russ Bursch and Lee Mauk
Steve Bye
Kathryn Cahill
Karin and Frank Canfield
Karen and Richard Carney
Clara Caruso
Sarah and David Caruso
Jerry Cassidy
Marco Cervantes
Cynthia Chapman
David Chin
Braden Claassen
Grace Cogan
Bobby and Elliot Cohen
Ruth Colby
Cynthia F. Collins
Margie Commerford
Geoffrey Conklin
Megan Conley
Doug and Ann Cooley
Jeanne Corwin
Gary Costello
Eram Cowlas
Amy Cox and Charles Vanek
James Crider
Christine Cundall
Julie Curtsinger
Thomas and Mary Czech
Maggy and Tom D'Onofrio
Lynda Dahl
Steve Dahlberg
Audrey Dammer and Jim Boyer
Robert and Charmé Davidson
Donna L. Davis
Tom E. Davis
Kathryn and Larry Decker
Shauna Dee
Dianne Del Giorno
Dan Delaney
Virginia and John Dell
Dennis Delude-Nafus
Sandra Demland
Bob and Lori Derus
Pamela Desnick
Beth Desotelle
Lisa Dethloff
Lisa Deutsch and Jeffrey Wepplo
Caroline Dey
Sunny Didier
Marcus and Cynthia Dilliard
Sharon and Jim Dimond
Cheryl and Barry Divine
Sue Dosal
Kari Douma
Phyllis and Christopher Dozier
Susan Dragsten
Natalia Dreizin
Charles P. Driscoll
Craig Dunn
Mary Dunnavan and Roger Gross
Doug Dunning
Charla and Jeffrey Eccles
Lynn Eckerline
Linda Eckman
Dorothy Edelson
Rebecca Eilers
Tom Emmert and Tom Rosen
Maureen Engelhardt
Robert Englund
Evy Engrav
Erin Erdahl
Hope Esparolini
Larry Espel and Cyndi Hasselbusch
Chris Estee
Anna Marie Ettel
Timothy Etter
Mark and Kelly Evans
Clarence and Molly Falk
Connie and Gary Falkenstein
Becky and Damon Farber

Sheila Faulkner and Russ McPherson
Douglas Federhart
Judith Fedo
Don Feeney and Diane Carter
John J. Feigal
George Ferguson
Patricia Ferrieri
Sara and Karl Fiegenschuh
Stephen Field and Stephen Herzog
Chad Fitch and Denisea Fitch-Elsola
Carolyn Fiterman
Shelley Fitzmaurice
Tammy Fleming
Betsy and Keith Ford
Jinnet Fowles
Dana Fox
Ron and Barb Fraboni Family Fund
Robert Frame
Ernie and Joanne Frankovich
Craig Freeman
Mary Freeman
Joan Freese
Kathrine P. Frey
Jan Frisch
Johnnie Fulton
Amy and Harry Funk
Patricia Gaarder
Sharon and Bill Garber
David Gardner and Ronda Willsher
Fred and Gael Gardner Fund of the Princeton Area Community Foundation
Karen J. Garvin
Walter Gegner and Glenée Salmon
Leland and Beverly Gehrke
Deborah Gerhardt
Beverly Geyer
Mark Gilbertstadt
Sue Gilsdorf
Jerry Girton
Elizabeth Goebel
Ray Goettl
Judy and Loran Goff
Barbara Golden
Dorothy Goldie
Renee Goodell
Kurt and Christina Gough
Claire Graupmann
Myra and Roger Greenberg
Geordie Griffiths
Greta Grosch
Andrew and Tina Grzeskowiak
Bonnie Grzeskowiak
Nancy Guldberg
Curt and Catherine Gunsbury
Barb Gurstelle
Patricia Haarman
Paul and Kate Habegger
Pat Hagerty
Kelly and Ben Hain
Sandra Haines
David and Judy Halgren
Mark and Mary Jo Hallberg
Christie Hammes
Rosella Hanson
Thomas Hanson
Dr. Shannon Harris
Roxanne Hart and Scott Nelson
Dr. Daniel C. Hartnett Family Foundation
John and Kathryn Hatlestad
Phebe Haugen
Judith Hawley
Andrea and Michael Hazard
Gretchen Heath
Cat Hefferan
Laura Heglund
Jelan and James Heidelberg
Alan Heider
Julie Heinmiller
Judy Heiser
Julaine Heit
Mark and Mary Henderson
Janet Henquinet
Bridget and Joel Herrmann

Russell Heuckendorf
Christopher Hibma
Susan Hicklin
Dawn Marie Hill
Wilbur Hill
Sandra Hillesheim
Mark Hodkinson
Martha P. Hoffman
Linka Holey
Catherine Holtzclaw
Bridget Honsey
Margaret Horstmann
Margaret and Mark Hottinger
Susan Humiston
Kathleen and Mark Humphrey
Kathleen Humphries
Betsy Husting and Joyce Mellstrom
Hugh Huston
Beth Ann Iseminger
David and LuAnn Iverson
Jay and Beth Jackson
Mike and Lorinda Jackson
Bruce Jacobs
Sandy Jacobsen and Dean Hedstrom
Diane and Paul Jacobson
Mark and Jeanne Jacobson
Donald and Pamela Jakes
Ann Jalonen and John Moulder
Bonita Janda
Greg and Barbara Janssen
Suzanne Jebe
Joan Jemison
Ann Jennen
Beverly Johnson
David Johnson
Doris Johnson
Jana Johnson
Jen and Ben Johnson
Jim Johnson
JoAnn Johnson
Katherine Johnson
Mark Johnson
Patricia Johnson
Thomas L. and Mary D. Johnson
Ellen Jones and Robert McKlveen
Lawrence and Kerry Jones
Mary A. Jones
Sally and Charles Jorgensen
Shawn Judge and Stephen Yoakam
Scott and Julie Kammer
Mary Kaphings
Shirley and Arnold Kaplan
Lois Kapteina and David Truckenmiller
Michael Kearney
Debra Kelley
Barbara Kettering
Terry Kilburn and Peter Thomson
Gregory King
Linda King and Robert Schauinger
William King
Mae Kirby
Patricia Kirkpatrick
Kathy Kirvida
Samuel Kivi
Cyndi and Greg Klaus
Tracy and Craig Knighton
Catherine and Scott Kohanek
Larissa Kokernot and Karl Gajdusek
Matthew Koncar
Jonna Kosalko and Dan Rabin
Dodie and John Kostishack
Bert Kritzer
Mark and Rebecca Krug
John Kruse
Sara Ellen Kuether
Charles Kuivinen
Diane and Allen Kuperman
Sarah Kuzel Leslie
Joe Kuznik
Jocelyn Maria LaBerge
Leslie LaCount
David Lande
Dr. Erik and Mary Langsjoen
Kately Langwith

David Larson
Rod and Jan Larson
Geraldine Lauer
Pat Laulainen
Ruth and Herb Lauritzen
Catherine Lawrence
Patty Lawrence
Jerald Lee and Donald Ofstedal
Moses Lee
Ryan Lee and Tod Petersen
Mathew Lefebvre
Sally Leighninger
Kirsten Lemke
Andrew Leshovsky and Louis Berg-
Arnold
Kristie Lester
Mac and Mary Lewis
Mary Lincoln and Mark Schneider
Barb Lind and Craig Poeschl
Kathleen S. Lindblad
Marilyn Lindsay
Catherine J. Little
Timothy and Susanna Lodge
Jon Michael Logue
Ann Long
Valerie Longfellow
Pamela Lott
Jeffrey and Diane Lovich
Ohad Ludomirsky and Arielle
Kaufman
Linda Luksan and David Munn
Judy Lund
Scott Lykins
S.D. Lyle and R.J. Beckel
Debbie and Tom Lyman
Debra Lynch-Rothstein
David and Mary Maas
Jack and Lynne MacBean
Beth and Mike MacDonald
Richard Madigan
Mike and Diana Magner
Duayne and Dianne Malewicki
Will and Willene Mangham
Bruce Manning and Tricia Cornell
Robert and MaryEllen Manske
Joanne Manthe
Patrick and Linda Marsh
Alfredo Martel
Kathleen and Frank Martin
Vivian and Jeff Martin
Jeffrey Masco
William Mask and Anne Howden
Kristin and Jim Matejcek
Renee Matejcek
Patricia McCarthy
Robert and Polly McCrea Family
Fund of The Minnea*
Kathleen McLaughlin and Daryl
Skobba
Nancy McNutt
Molly McShane
William and Joan McTeer
Laurie and Dave Mech
Barbara Menk
Marianne Merriman
Frank Meuers
Aimee Meyer
Rita Meyer
Margaret Michaelson
Katherine and Thomas Miller
Phyllis Miller
Robert Jardin, Kevin Miller and Izzy
Miller-Jardin
Margie Miller
David and Karen Minge
Pamela Mink
Barb and Kevin Minnerath
Mary Mithun
Saralee Mogilner
Shawne and Michael Monahan
Jean Montgomery
Jolene Moore
Bridget and Sam Morehead
Ann Morrissey and Bruce Jacobson
Kate Morton-Peters and Stan Oleson
Laurie Mount
Karen Mueller
Bonnie Mulligan and Charlie
Greenman
Katherine Murphy
Nora Murphy
Sarah Murphy
Joyce Myers
Peggy Naas
Allison Nahr
Katie Regan Nath
Nancy Nelson
Robert and Terry Nelson
Steve and Amy Nelson
Robert Nesterowich
Nelson and Beth Neubrech
Lucia Newell
Casey Nichols
George Harman Niece
Terry Nolan and Carl Markus
Lynn Noren
Chris and Carol North
Gary Nygaard
Kathy O'Malley
Elizabeth O'Mara
Michele O'Rourke
Lynn and Ben Oehler
Lori Oleson
Mary Olk
Benjamin Olsen and Derek Waller
Tamara and Robert Olsen
Elaine and Harry Olson
Kathie Olson
Margaret Olson
Scott Olson
Jean Orbison Van Heel
Carol and Keith Ottoson
Barbara Owens
Marcia and Russ Palma
Mary Ann Palmer
Mary Jane and Bruce Pappas
Agnetta Parr
Mark and Julianne Parrott
Chuck and Jo Parsons
Stephan and Mary Patnode
Lauren Peck
Peg Peck
Margaret Peck
Jaime Pedraza and Stephen
Gronewold
Susan and William Pelton
Jeffery Perkey and Robert Spikings
Carol Peterson
Daniel Peterson
Tina Ham Peterson and Ric Peterson
Stephanie Phelps Johnson
John Pikala
Diane Pike
Pike Willett Family Fund
Daniel Pinkerton and Jane Johnston
Ellen and Jim Pinkowski
Eileen Pinto
Julie and Jim Podlich
Maryanne Poliseno
Deborah E. Pollak
Donna Porfiri
Jody Portu
Diana Postlethwaite
Karen and Don Prestly
Joanne Provo
Brad and Linda Quarderer
Debra and Lawrence Que
John and Elizabeth Quinn
T. Mychael Rambo
Maura Randall
Michael Reding
Judy Reeve
Judy Reiber
Stan and Jane Rein
Tom Renshaw
Rosemarie and Dick Rice
David Richardson
Stephen and Marilyn Riederer
John F. Riehle
John and Genevieve Ries
John and Shiela Robertson
Michael Robins
Carolyn Roby
Pam Rosch
Susan Rose
Steve and Kris Rose
Marilyn and Jim Rosenbaum
Marilyn Rossmann
James Roth
Travis and Sarah Rother
Mary Rothstein
Rodney Rowe
Barbara Roy
Graydon Paul Royce
Russ and Karen Rubin
Robert and Wendy Rubinyi
Carolyn Lee Ruppert
Diane Rutherford
Debra and Tom Ryan
Kristin and Robert Ryan
Cal and Claudia Ryan-Mosley
Stephanie Samara
Dorene and Ed Sarnoski
Elaine C. Savick and Michael Hindin
Tom and Nancy Saxhaug
Mary Schaffer
Julie Schaper
Noel Schenker
Gene and Martha Schermer
Kathleen Schier
Helen and Stephen Schlosser
Dianne Schmiesing and Victor
Zupanc
Barbara Schmitt
Barbara Schmitt
Schuler Shook
Meg and Joe Schuller
Karin Schurrer-Erickson and Ron
Erickson
Steven R. Schwagel
Judy Schwartz
Eva Schwartz
Trish and Ralph Scorpio
David Sebberson and Meg Lewis
Dan and Cyndy Seeman
Sharon and Stephen Segal
Marsha and Joel Seltz
Carole Senty
Michael and Shelli Shann
Norah Shapiro
Gale Sharpe
Jim Sheeley
Maximillian T. Shemesh and K. Dawn
Kohlman-Shemesh
Kelley Sheppard
Catherine Shreves and Tom Bird
Stephen Shuman
Laura Silver and Jeff Hertzberg
Mary Sue and Ryan Simon
Lisa Sinclair
Michael Sinder
Kristin and Harps Singh
Sue Sjeklocha
Holly Slattery
Lisa Slazl
Jim Smith
Rachel Smoka-Richardson and Dan
Richardson
Anthony Sofie
Robert and Jennifer Soland
Wendy Sommer
Larry Sonsthagen and Bob Shepherd
Adam Southam
George Spaulding and Mary Kay
Fortier Spalding
Justin Spenner
Hope Stanley
Carey Starr
Nanette L. Stearns
Angela Steele
Arturo Steely
John Stefany and David Odenbach
Karen Steger
Paul Stein and Peg Powers
Mary Steinberg
Peter and Janet Steinhagen
Donna Stephenson
Karen Sternal and Lowell Pickett
Donna Sternberg
George and Janet Stevens
Lisa Stevens and Jeffrey Hatcher
Cheryl Stever
James Stolz
Claire Stortz
Glenn Strand
Tim Strand
Patty and Robert Strandquist
Irene Suddard
Sulasalmi Fund of The Minneapolis
Foundation
Sue and Harry Summitt
Robert and Mary Sutherland
Craig and Janet Swan
Hildy Swedean
Mary Ann Sweeney
Julie A. Sweitzer
Christina M. Szitta
Daniel Taylor and Daniel St. Martin
Ryan Taylor
Tammy Taylor
Ella Thayer
Axel Theimer
Anthony Thein
Bob and Carol Thomas
Kay Thomas
Sean Thomas
Gary and Kay Thompson
Harv Thompson and Richard Klemm
Keith Thorkelson
Erik and Emily Thurman
Andrea Tichy and Dan Muck
Jacquelyn Tofte and David Broberg
Charlaine Tolkien
Michelle Tolliver
Kristen Underwood
Stephanie Untiedt
Katherine and Martijn van de
Ruijtenbeek
Wendell Vandersluis and Cynthia
Marsh
Lisa van der Steur
Chris Van Klei
Janet VanFossan
Tammi Veale
William A. Velte & Mary Lee B.
Blomgren
Susan Vento
Connie Vincent and Greg Moritko
Mary Claire Wahlberg
Beckie Wahlin
Lynn and Chuck Wallin
Melinda Ward
Janet Warwick
Lance Watkins
Margaret Weber
Leon and Lindy Webster
Robert Weeks
Marcie Weinandt and Greg Hippen
Carol and Sandy Weisberg
Elaine Weismann
Stephanie Weiss
Jennifer and Joe Weissman
Lucas and Britta Wells
Daniel Weninger
Leona Werner
Robin Westacott
Jim Westerman
Shelley White
Gary and Andrew Whitford-Holey
Barbara Wiener
Elizabeth and Cornelius Wiens
Lori Wilfahrt
Richard Williams
Ronda Willsher
Mary Wilmes
Mike Wilson
Mary Wingfield
Cynthia Wolff
Donna and Mike Wolsted
Maryann Wycoff
Steve and Cheryl Ylvisaker
Mary Youle and Phil Cohen
Adam Yust
Randy Zadow
Srilata Zaheer
Sue Zelikson
Aaron Zenner
Josh Zenner
Mark and Penny Ziessman
Jeanne and Jeff Zlonis
David and Francine Zook
Amy Zortman

Honor and Memorial Gifts

In memory of Jim Bendtsen

Katheleen Larson

In memory of Judy Eilertsen

Lucia Newell

In memory of David and Eileen Estee

Chris Estee

In memory of Dan Feidt

Margery Martin

In memory of Joyce Gordon

Eileen Thomas and Melanie Milbradt

In memory of her father, Bob Haarman

Patricia Haarman

In memory of Ben Olk, Jr.

Jean and Jim Hartman

In memory of Carole Petersen

Ryan Lee and Tod Petersen

In memory of Gay and Carl Prosek

Charlene Washburn

In memory of Nina Rothchild

Ken Rothchild

In memory of Rolf Skjei

Anonymous

Shawn O'Rourke Gilbert

In memory of Linda K. Vilmo

Gregory L. Vilmo

In memory of her mom, Nancy

Lucia Hunt

In honor of Daniel Baseman

Raymond J. Ottman

In honor of Steve Bergerson

Nancy Mosier

In honor of Carson Brook

Northstar MLS

In honor of Jay Harkness

Ann Long

In honor of Jay Harkness and Jean Storlie

Suzanne Born and Carol Cummins

In honor of Sandy Hey

Holly Denis

Mary Freeman

In honor of her sisters, Heather and Hildy

Alison Hernandez

In honor of Beth Hobbs

Nancy Mosier

In honor of Bernadette and Jeff Janisch

Andrea Tichy and Dan Muck

In honor of Kate Lawson's birthday

Amy Andersen

In honor of Jodi Manning

Arlene Cohen

In honor of Tom McNeill

Madeline McAlister

In honor of her sister

Diana Postlewaite

In honor of the amazing cast of *Puttin' on the Ritz*

Sue Salmela and Paul Burnett

In honor of Peter Rothstein

Ryan Taylor

In honor of Julie Schaper

Marcia Horwitz

In honor of Quinn Shadko

Dana and John Schroeder

In honor of David Walton

Sandy Walton

In honor of David Warner and family

Jody Virnig

In honor of Kiowa and Tyler

Sandra Wieser-Matthews

In honor of Sally Wingert

Douglas Federhart

In honor of Fremajane Wolfson

The Dean Greenberg Family Fund

Deanna Phillips

Gary and Susan Rappaport Family Charitable Fund

In honor of Maggie Zoncki

Judith Hawley

On behalf of the Stablich Foundation

John F. Riehle

Gala Sponsors

PLATINUM SPONSORS



ClearPath
Wealth Management
Ameriprise Private Wealth Advisory Practice

GOLD SPONSORS

RBC

US Bank

Crave

Joel Gott Wines

Legacy Circle

We gratefully recognize the following individuals who have chosen to include Theater Latté Da in their estate plans. These estate gifts will sustain our artistic excellence and fiscal health for years to come:

Kent Allin and Tom Knabel

Mary Ebert and Paul Stembler

Stephen Fischer

John Hemann*

Bill Venne and Doug Kline

Carol Lichterman

Patti Pinkerton

Kevin Winge and Kevin Shores

Jane Zilch

If you have included Theater Latté Da in your estate plans but are not listed here, or if you would like to learn more about legacy giving to Theater Latté Da, please contact Hilary at hilary@latteda.org.

next

25 X 25



Theater Latté Da was envisioned by Co-Founder and Artistic Director Peter Rothstein as a home for the future of the American musical. TLD has lived this vision since our beginning, with 13 of our 25 mainstage seasons including world premieres. Our NEXT 20/20 campaign allowed TLD to support the development process for 20 new works over five years. We are incredibly grateful to the donors who made this robust endeavor possible.

TLD is embarking on an even more ambitious milestone. Through NEXT 25x25, we will invest in the future of the great American Musical and its playwrights, composers, and lyricists through world premieres, the annual NEXT Festival, our NEXT Up development program, and NEXT Generation commissions.

To make a gift in support of NEXT 25x25, please contact Hilary Smith, Director of Development, at hilary@latteda.org for more information.

Corporate Matching Gifts

Amazon Smile
Ameriprise Financial
Best Buy
Lumen Technologies
Medtronic
Nike
Northstar MLS
Nuance Communications
Optum
RBC Corporate Foundation

Ryan Companies
Target
TIAA
Toro
UnitedHealth Group
US Bank
Voya Financial
Wells Fargo
Xcel Energy Foundation

In-Kind Supporters

Cornerstone Copy Center
Hammel Green & Abrahamson
Richard Hamson
Christine Schrami
Norma Seashore
Lucas Wells



Funders are listed for the donations made between between October 1, 2021 to December 31, 2022. Please accept our apologies for any errors or omissions. A complete list of donors can be found online at latteda.org. For corrections, please contact hilary@latteda.org.

Board of Directors

Cara Sjodin, *Chair*
Glyn Northington, *Vice Chair*
Les Bendtsen, *Secretary*
Bridget Morehead, *Treasurer*

Theresa Alewine
Tiffany Cooper-Allen
John Arechar
Toya Stewart Downey
Keith Ford
Ron Frey
Matt Fulton
Ben Grabski
Sandy Hey
Tom Knabel
Christine Larsen
Kate Lawson
Jeff Lin
Penny Meier
Peter Rothstein, *ex-officio*
Elisa Spencer-Kaplan, *ex-officio*
Brian Svendahl
Kari Groth Swan
Rabindra Tambyraja
Lezlie Taylor
Kevin Winge
Fremajane Wolfson

Staff

Peter Rothstein
Founding Artistic Director

Elissa Adams
Associate Artistic Director & Director of New Work

Allen Weeks
Director of Production & Operations

Elisa Spencer-Kaplan
Managing Director

Brittany Wallman
Director of Marketing

Hilary Smith
Director of Development

Production

Kyia Britts
Associate Production Manager

Amber Brown
Costume Supervisor

Eric Charlton
Associate Technical Director

Whitley Cobb
Carpenter

Sara Herman
Scenic Charge

Shelby Reddig
Production Stage Manager

Bethany Reinfeld
Technical Director

Nicholas Tranby
Audio Supervisor

Abbee Warmboe
Props Supervisor

Artistic Associate
Kelli Foster Warder

Co-Founder
Denise Prosek

Marketing & Guest Services

Chris Cartwright
Marketing Manager

Gillian Constable
Box Office Manager

Reece Gray
Guest Services Manager

Carly Maslowski
Box Office Associate

Tre' Miller
Front Of House Associate

Grace Peterson
Box Office Associate

Kathleen "Sully" Sullivan
Concessions Lead

Development

Amber Monaghan
Development Associate

Rachel Smoka-Richardson
Grantwriter

Accounting

Roni McKenna

Legal Counsel
Michael Sinder



iware
northeast

\$50 OFF
COMPLETE PAIR
WITH THIS AD



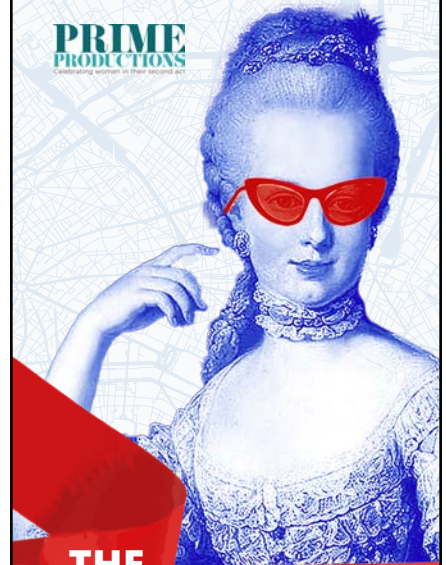
fine eyewear

339 13th Ave. NE • Minneapolis, MN

iwarenortheast.com • 612.617.1070

PARK SQUARE
THEATRE
STEPPINGSTONE
CREATIVE LEARNING

PRIME
PRODUCTIONS



THE REVOLUTIONISTS

By Lauren Gunderson

Directed by Shelli Place

MAR 29 - APR 16

TICKETS ON
SALE NOW!



Scott Stensrud CRPC, CRPS®

Financial Advisor

ClearPath Wealth Management

A private wealth advisory practice of
Ameriprise Financial Services, LLC

651.447.2430

8935 33rd St N, Ste 1

Lake Elmo, MN 55042

scott.2.stensrud@ampf.com

ameripriseadvisors.com/scott.2.stensrud



What matters most to you in life?

It's a big question. But it's just one of many questions I'll ask to better understand you, your goals and your dreams. All to help you live confidently – today and in the future.

Not FDIC or NCUA Insured | No Financial Institution Guarantee | May Lose Value

Ameriprise Financial Services, LLC. Member FINRA and SIPC.

© 2023 Ameriprise Financial, Inc. All rights reserved.





RESTROOMS

We have fully remodeled our lobby and restrooms to make them All Gender restrooms. Each contains five fully private stalls with ADA accessible facilities.

ACCESSIBILITY

Accessible seating: Accessible seating is available at the Ritz Theater in Row E, Sidebar P, and Sidebar Q. All other seating requires stairs for access.

Courtesy wheelchairs: Courtesy wheelchairs are available for use for patrons who may have mobility challenges. Please see our House Manager or Box Office Manager for use.

ASL Interpreted Performances: We offer ASL-interpreted performances for every production during our season. These performances are usually offered the second Thursday in each production.

Audio Described Performances:

Professional audio describers provide narration of on-stage action, costumes, and scenery during the performance. Listening devices are available for patrons to use during the AD scheduled performances.

Open Caption Performances: We offer open captioning for select weekend performances. Captions of the text are displayed on a screen near the stage, more easily read from our sidebar seats. Check the performance calendar for the open captioning dates or call the Box Office at 612.339.3003 for details.

Assistive Listening Devices: We offer assistive listening devices for all performances. Please stop at the Box Office to check one out for use during the performance.

Large print programs: Large print programs are available upon request. Please see the box office or request a copy from an usher.

AUDIENCE INFO & POLICIES

COVID-19 Policy: As of the start of this season at the Ritz Theater, we are no longer requiring proof of vaccination or a negative COVID-19 test result. Masks are welcome but optional, EXCEPT for Wednesday night & Sunday matinee performances when they are required. This policy is subject to change.

Photo & Video: Photos of the set are allowed before or after the show and during intermission, but not when artists are onstage. Video or audio recording of any kind is strictly prohibited.

Phones: The ringing of cellular phones or texting is highly disruptive during a performance. These devices should be turned off during the performance.

COMING SOON...



WE SHALL SOMEDAY
WORLD PREMIERE!

BOOK & LYRICS BY HARRISON DAVID RIVERS

MUSIC & ADDITIONAL LYRICS BY TED SHEN

DIRECTED BY KELLI FOSTER WARDER

STARRING RONNIE ALLEN



THEATER MUSICALLY

The roots of resistance and resilience run deep in three generations of a Black family grappling with inequality, violence and oppression. This intimate new musical asks us to contemplate the cycle of racism in America and how we might commit to creating real change.

APR 19 - MAY 14, 2023 • RITZ THEATER • TICKETS AT [LATTEDA.ORG!](https://latteda.org)